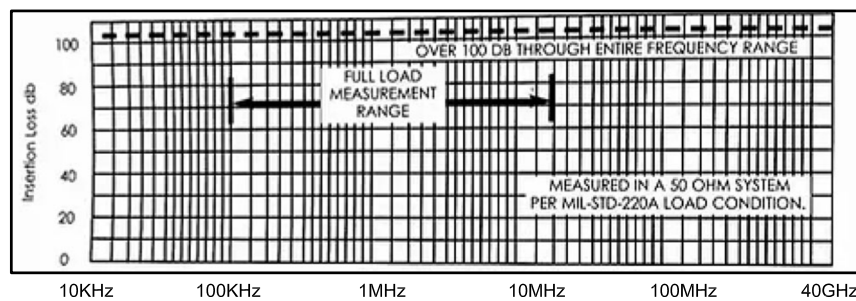
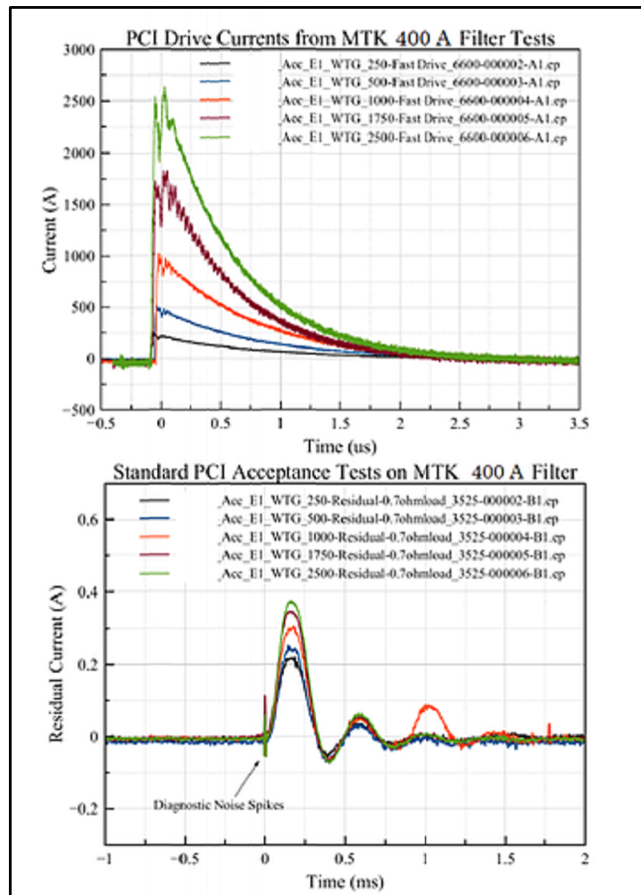
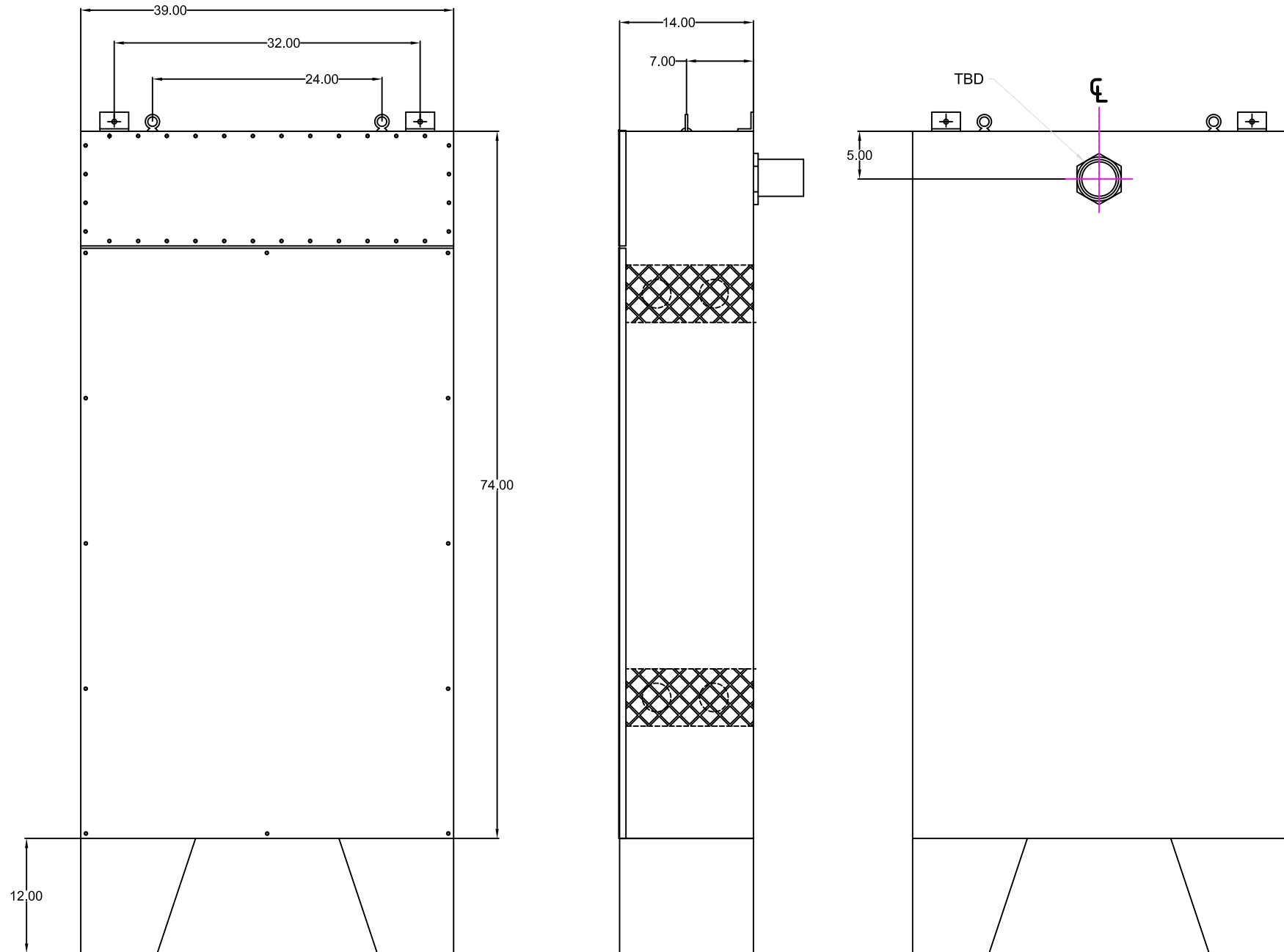


REVISIONS			
REV	DESCRIPTION	DATE	APPROVED
1	PRELIMINARY		



Insertion Loss: 100db from 14 KHz to 40 GHz measured in accordance with MIL-STD-220A, load condition.



**FEATURES**

- Meets or exceeds MIL-STD-188-125
- Designed, manufactured and tested to the applicable portions of MIL-F-15733.
- Each Individual filter circuit is replaceable in the field without the use of special tools.
- Each individual filter is hermetically sealed.
- Terminals: Each circuit is terminated with a flexible lead to an electrical standoff preventing damage to the terminals.
- Maximum voltage drop: 2 Volts.
- Maximum operating Temperature 85°C.
- Overload safety: 140% rated current for 15 minutes.
- Case: Steel all welded construction suitably plated on grounding surfaces and painted or plated on all other surfaces.

MTK PART NUMBER: MTK4E400

\* Add "Z" to end of part number for inside shield mounting.

**SPECIFICATION:**

- 4 X 400 Amps circuits.
- 0-277 Vac Line to Neutral.
- 0-480 Vac Line to Line
- 0-60 Hz.
- Aproximate weight: 700 lbs

NEXT ASSY		MODEL		USED ON		TOLERANCE (EXCEPT AS NOTED)		APPROVALS		ELEC ENG		MECH ENG		MANUF ENG		<b>ELECTRONICS, INC.</b>		<b>EMP POWERLINE FILTER</b> <b>FILTER4 X 250 AMP</b>	
DECIMAL	FRACTION	ANGULAR	±	±	±	±	±	±	±	±	±	±	±	±	±	±	±	±	±
XX	.030																		
XXX	.015																		
SIZE	D	DRAWN BY	JGL	DWG NO.	MTK4E40000	REV	1	SCALE	NONE	DATE	03-12-2021	SHEET	1	OF					